

SNAPSHOT

STRIP CHROME PLASTIC MODEL PARTS WITH LIQUID PLUMR

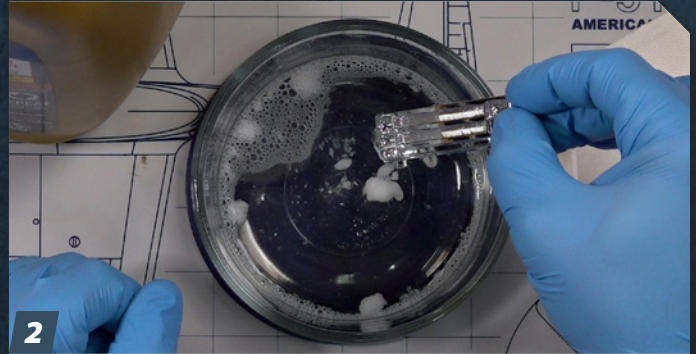
IF YOU EVER FIND IT NECESSARY to remove chrome plating off plastic model kit parts, here's a quick, tried and true way to get it done.

By Tim Kidwell



1

Here's what you'll need: chrome parts to strip, two glass or ceramic bowls big enough to accommodate the largest parts, Liquid Plumr (original works best, but any of them will do the job), paper towels, disposable gloves, tweezers, toothpicks, and an old toothbrush.



2

Pour the Liquid Plumr into one of the glass bowls. Do this slowly to avoid splashes or spills. Carefully place the chrome-plated parts in the bowl. If you don't have a big enough vessel to hold all the parts, you may have to strip the chrome in batches.



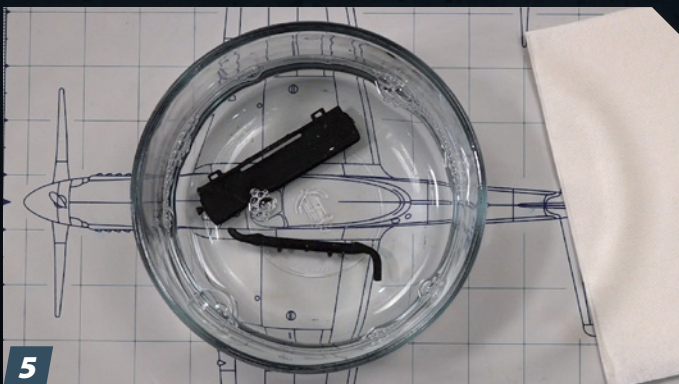
3

Use tweezers to fully submerge the chrome-plated parts in the Liquid Plumr. They will probably float to some extent, but the important part is to make sure the Liquid Plumr coats the parts.



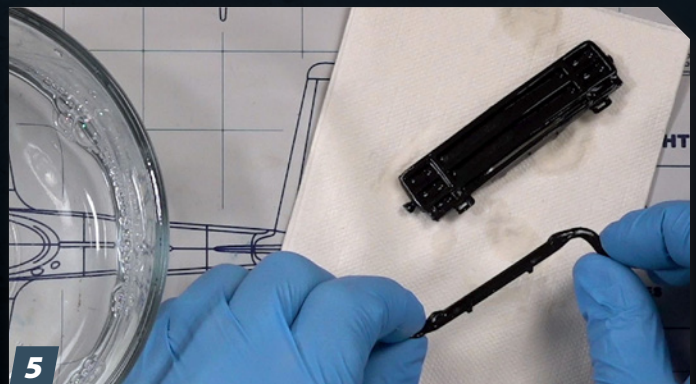
4

Wait for 10-15 minutes. Go do something else to keep yourself occupied. Unless you like watching paint dry or a pot of water boil, you'll want to spend time away while the Liquid Plumr does its thing.



5

Ta-da! The chrome has disappeared from the parts. Fill the other bowl with water and thoroughly rinse the parts. You may need to scrape with a toothpick or scrub with a toothbrush to eliminate stubborn chrome in nooks and crannies.



5

You may want to wash the parts with warm water and liquid dish soap after the Liquid Plumr bath to eliminate any residual chemicals. When you've dried the parts completely, you're ready to glue, prime, and paint! **FSM**